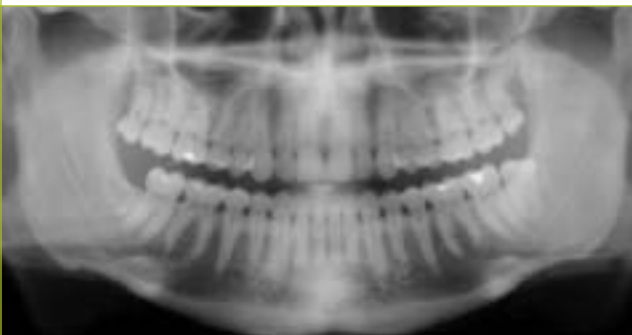




## INTRODUCING THE CDRPANX



### THE DIGITAL PANORAMIC UNIT DESIGNED FOR OPTIMAL PATIENT POSITIONING AND HIGH QUALITY IMAGES

Schick Technologies has brought digital panoramic imaging to a whole new level of affordability and simplicity.

**FIRST**—CDRPanX features proven Schick CDR digital imaging technology and renders crisp, clinically accurate images.

**SECOND**—Only slightly more expensive than most film-based systems, CDRPanX eliminates costly panoramic film and processing - increasing your economic efficiency.

**THIRD**—CDRPanX is a perfect complement to offices that use digital intra-oral sensors, including Schick's best-selling CDR and CDRWireless sensors.

**FOURTH**—Eight different imaging modes and three laser alignment beams for optimal exposures.

**FIFTH**—Superior vertical travel allows it to be used with patients of any height, including those in wheelchairs.

*Digital panoramic imaging - fast, easy, clear, accurate.*



## SCHICK DIGITAL PANORAMIC IMAGING — THE SMARTER WAY TO GO DIGITAL

*quick, real-time images on the computer screen*

*eliminates film and cassettes*

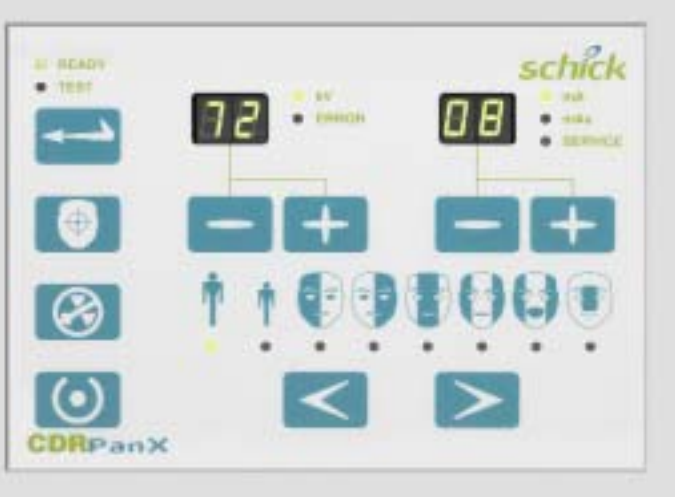
*no processing, darkroom or chemicals*

*increases your economic efficiency*

*better case presentations and case acceptance*

*integrates seamlessly with your practice management system*

*increased safety and comfort*



### CDRPANX SPECIFICATIONS:

Generator: Multipulse DC

X-Ray Tube: OCX105

Focal spot size: 0.5 IEC 336

Minimum total filtration: 2.5 mm Al

Anode Voltage: 60-86kV (2kV increments)

Anode Current: 4, 5, 6.3, 8, and 10mA

Exposure time: 19s - adult panoramic

Power Supply: 115V, 50/60Hz

Fusing: T8A

Weight: 474lbs

Electrical Safety Classification: Class 1, type B

Imaging modes (Exposure times): adult (19s), child (15s), left half (10s), right half (10s), anterior (8s), TMJ opened and closed (4x4s), frontal sinuses (8s)

Patient Positioning: 3 laser alignment beams (mid-sagittal, Frankfort, focal trough) bite guide, chin rest, optional temple support

### SCHICK AND PATTERSON DENTAL MAKE WORRY-FREE DIGITAL A REALITY

*Every CDRPanX system is installed, serviced and supported by Patterson Dental.*

*Comprehensive system training provided by the experts at Schick Technologies and Patterson Dental.*



CDRPANX

**schick**  
creating the image

SCHICK TECHNOLOGIES INC.

30-00 47th Avenue Long Island City, NY 11101 888-472-4425

www.schicktech.com

B1010023