

Installing USBCam2 Driver on Windows 7

(c) 2009 SCHICK TECHNOLOGIES, INC.

ALL RIGHTS RESERVED

PURPOSE

The following information will assist you with installing the driver for USBCam2 intraoral cameras on Microsoft's Windows 7 operating system.

REQUIREMENTS

These instructions assume that you have the following:

- Windows 7 Home, Premium, Business, or Ultimate (all 32-bit)
- CDR DICOM 4.5 CD or internet access to our website

**INSTALLATION
PROCEDURE**

Perform the following to install the USBCam2 driver.

Installing the Driver

1. Close CDR DICOM 4.5 software if open.
2. Disconnect the USB cable from the USBCam2.
3. Using either the 4.5 CD or the driver download available from our website, do either one of the following steps:
 - If you have the CDR DICOM 4.5 CD, insert the CD and browse to the Hardware folder. Double-click on CDR USBCam2 Driver.msi.
 - Alternatively, if you have internet access, you can [download the USBCam2 driver from our website](#).
4. When driver installation is complete, re-connect the USB cable to the USBCam2.
5. When reconnecting the USB cable, the Add New Hardware wizard will start. Follow those prompts until the wizard is completed.

Updating the Driver

1. Open the Windows Control Panel and navigate to System and Security > System > Device Manager.

installation Procedure

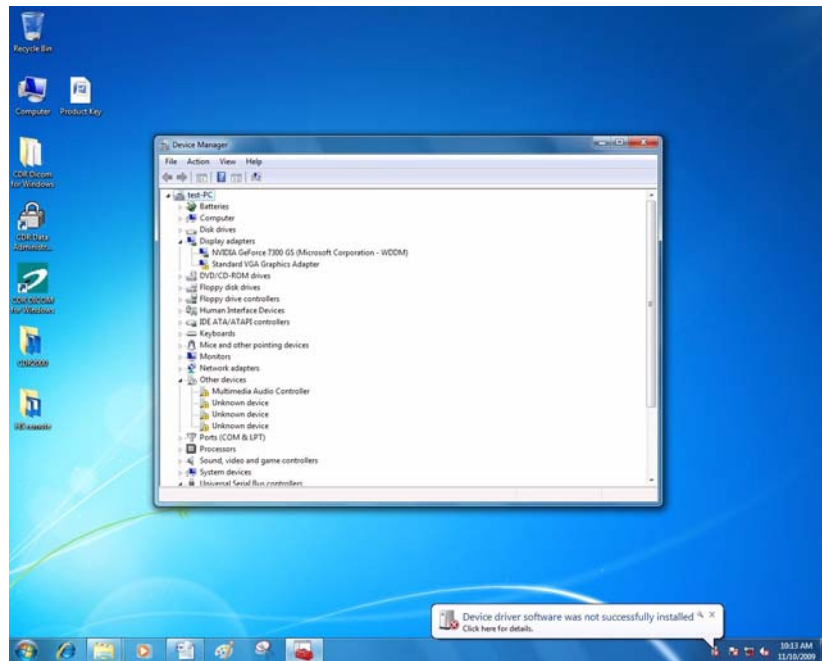


Figure 1. Device Manager on Windows 7 Desktop

2. Windows will indicate that the device was not successfully installed (Figure 1) and will be listed under Other devices (Figure 2).

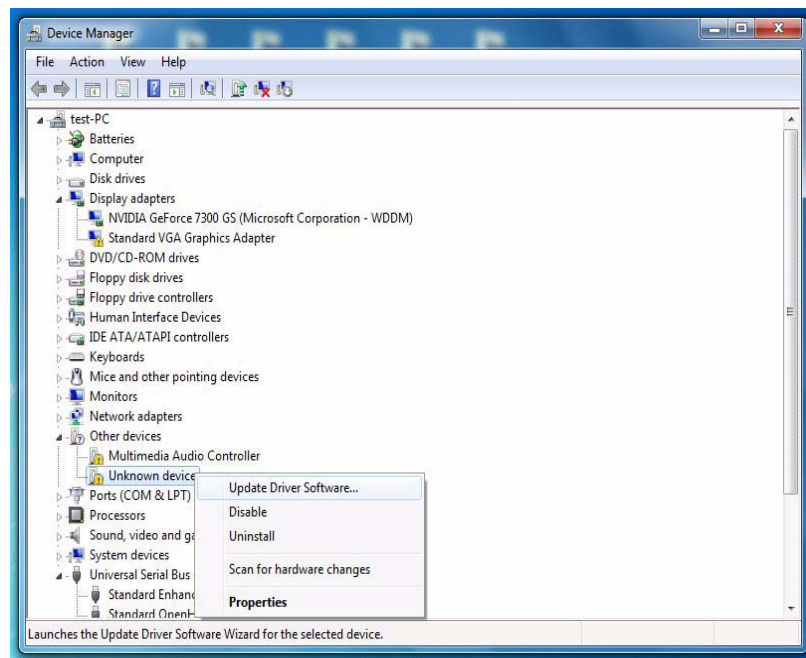


Figure 2. Device Manager

installation Procedure

Updating the driver (continued)

3. Browse the list of items for the Other Devices node. Expand it if necessary and select the Unknown device item.
4. Right-click on the Unknown device and select “Update Driver Software” from the context menu.
5. Select “Browse my computer for driver software” (Figure 3).
6. Click the Browse button and navigate to the USBCam2 driver: C:\Program Files\Schick Technologies\Shared Files\Drivers\USBCam20 (Figure 4).

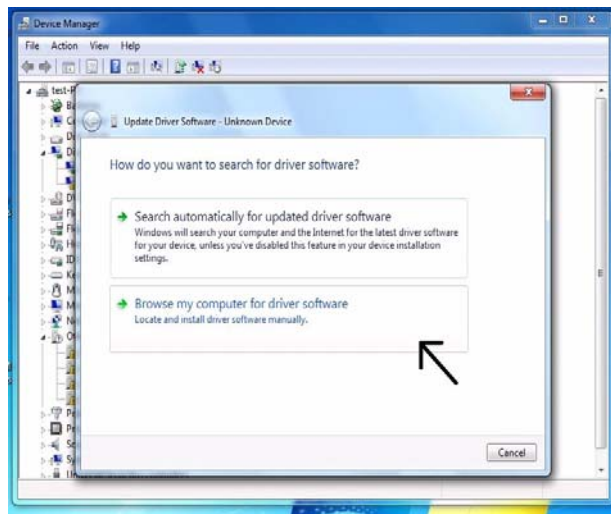


Figure 3. Search for Driver Software

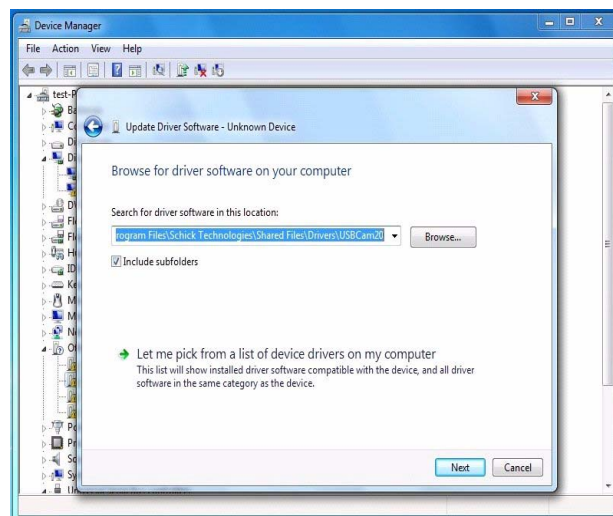


Figure 4. Browse Computer for Driver Software

installation Procedure

7. Click Next.
8. If a Windows Security message appears, click “Install this driver software anyway” (Figure 5).

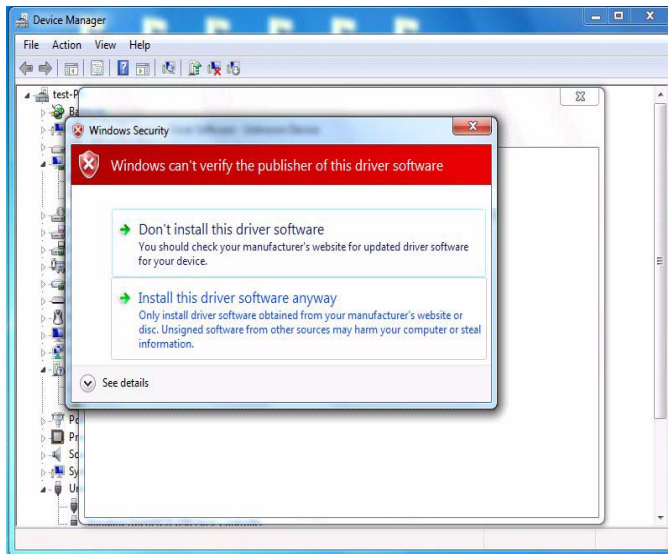


Figure 5. Windows Security Message

9. The message, “Windows has successfully installed your software driver software” is displayed (Figure 6).

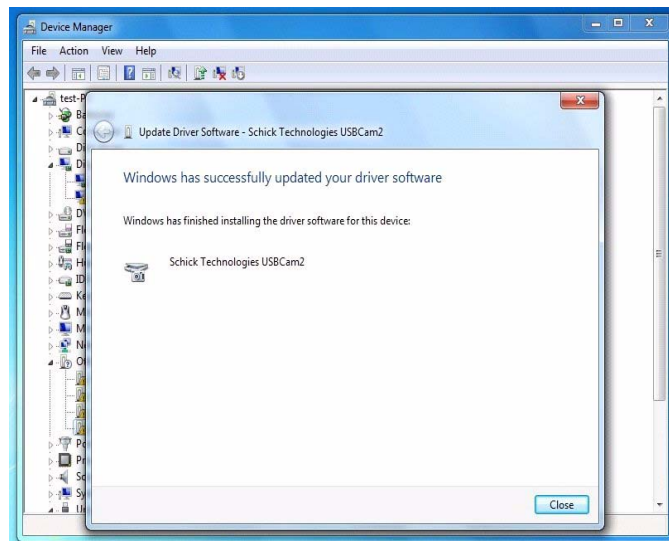


Figure 6. Driver Software Update Successful

10. Click Close.
11. Repeat these steps on every workstation where the USBCam2 is used.

- 12.** If you have questions regarding the installation of the USBCam2 Driver on Windows 7, please contact your appropriate support center for Schick Technologies' products or the authorized international dealer in your country or region.